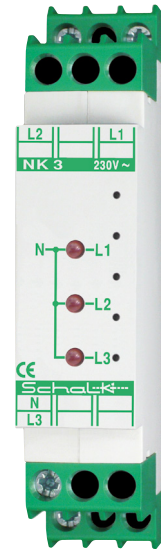




Mains monitor NK 3

For optical fuse, phase failure and signal monitoring in control cabinets and distributions



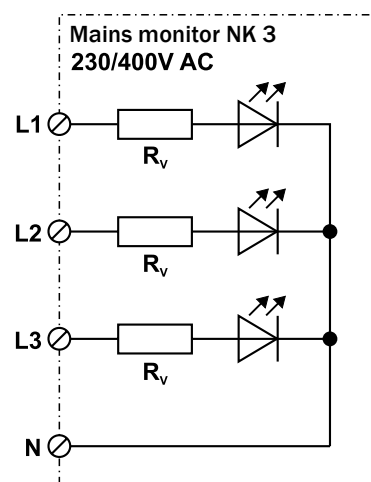
General information

The NK 3 mains control has 3 clearly visible LEDs mounted on the front. These LEDs are used for optical monitoring of the three phase conductors against the neutral conductor in a 230 V / 400 V three-phase network.

Of course, there can also be three independent 230 V AC voltages can be indicated by the NK 3.

Applications

Optical fuse, phase failure and signal monitoring in control cabinets and distributions



Technical data

Operating voltage:	230 / 400 V 50-60 Hz 10 %
Power consumption per LED	approx. 60 mW
Ambient temperature	-10°C to +45°C
Connection terminals	Socket terminals with captive screws M3.5
Clamping range	0.5 mm ² - 4.0 mm ²
Strip length	6.0 mm - 6.5 mm
Screwing torque	0.80 Nm
External dimensions	18 x 88 (45) x 58 mm
RAL colour	grey 7035 / green 6029

Technical data

Item no.	EAN	Type	Designation
NK3009	4 046929 901017	NK 3	Mains monitor 230 / 400 V AC